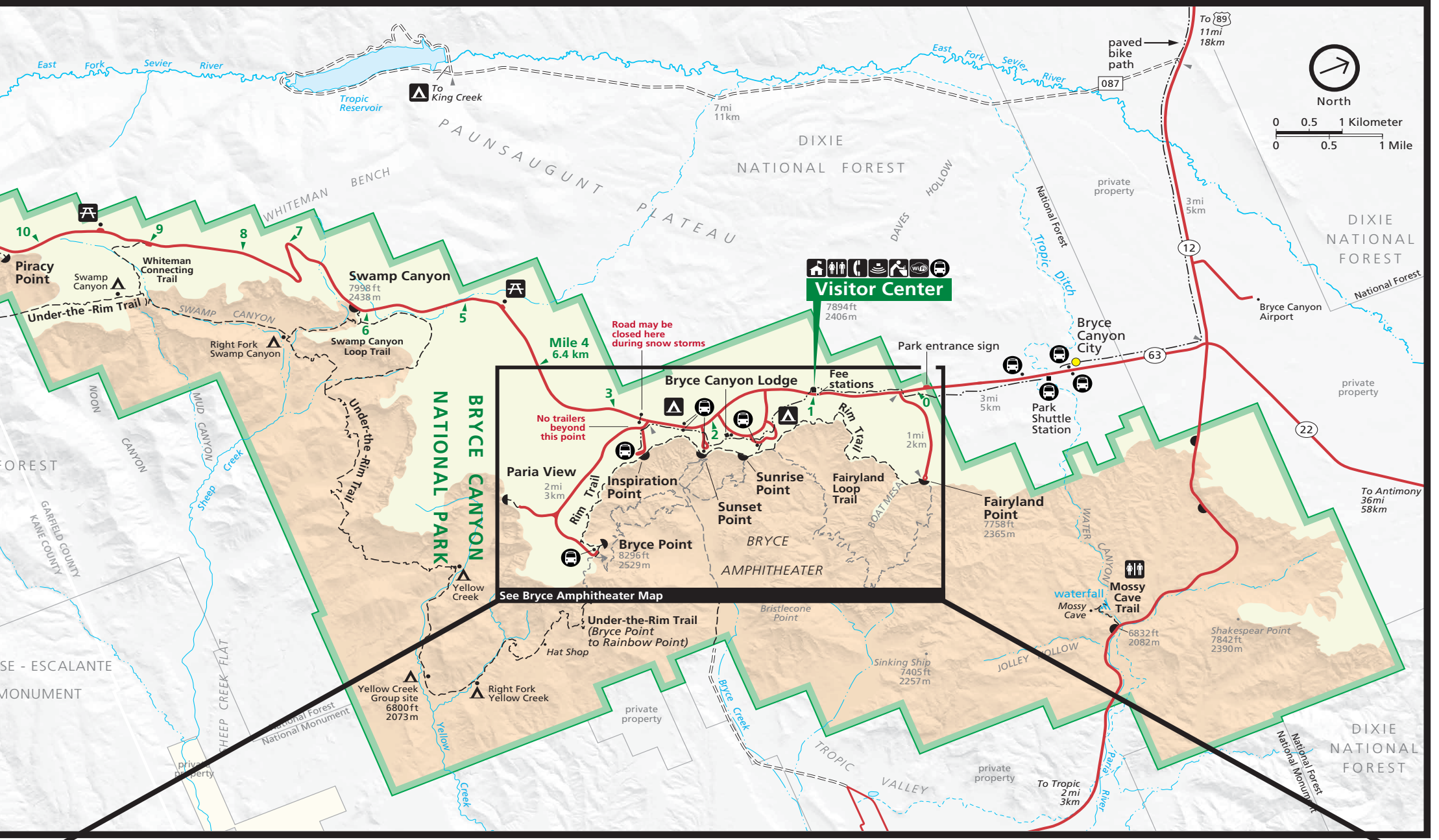


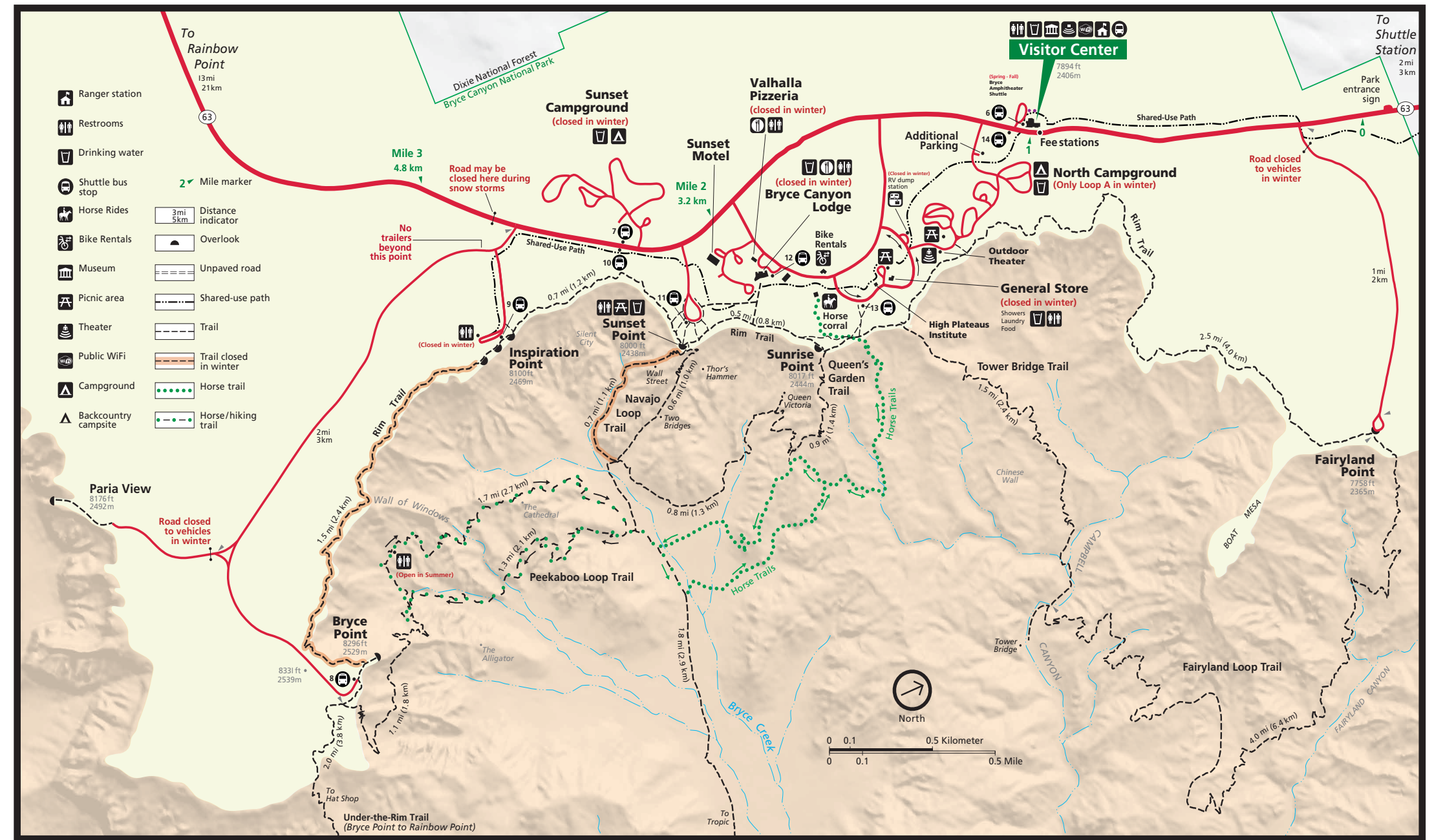
# Bryce Canyon Visitor Guide

U.S. Department of Interior  
National Park Service



## Bryce Amphitheater (Enlarged)

See Viewpoint Information Below  
Check out Trip Planning ideas on opposite page.



**BRYCE POINT**  
Trailhead for Rim Trail, Peekaboo Loop, Hat Shop, and Under-the-Rim Trail. An iconic viewpoint to begin any visit. Busy in summer. Turn located 1.5 miles (2.4 km) past Visitor Center.

**INSPIRATION POINT**  
Trailhead for Rim Trail. Bathroom in summer months. Great viewpoint for accessible stargazing. Turn located 1.5 miles (2.4 km) past Visitor Center (same turn as Bryce Point).

**SUNSET POINT**  
Trailhead for Rim Trail, Navajo Loop (and combination loops). 24-hour restrooms and water. Typically park's busiest parking lot. Turn located 1 mile (1.6 km) past Visitor Center.

**SUNRISE POINT**  
Trailhead for Rim Trail, Queen's Garden (and combination loops), close to Fairyland Loop, Tower Bridge Trail. General Store closed in winter. Turn second left past Visitor Center.

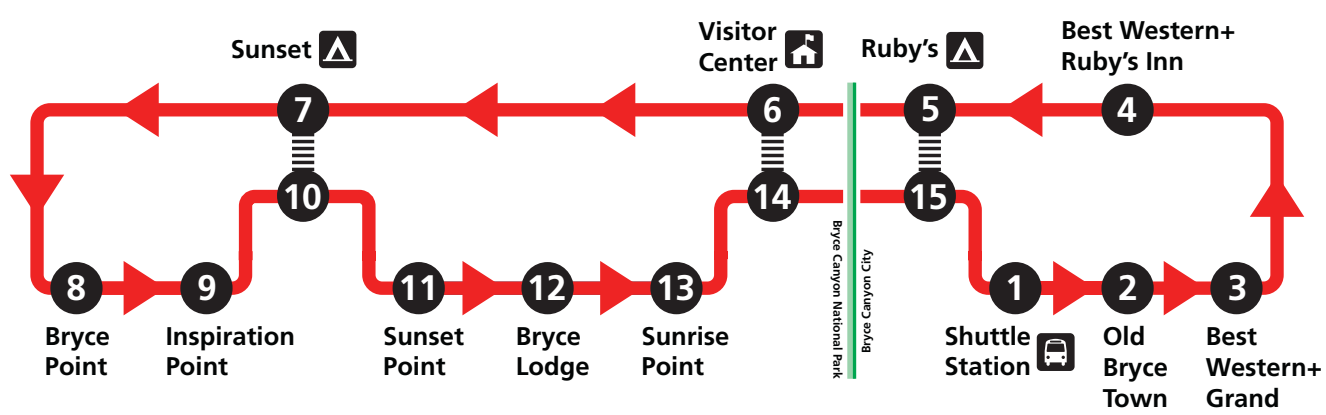
## Bryce Amphitheater Shuttle April - October

When's the next bus?  
Tracker at [brycecanyonshuttle.com](http://brycecanyonshuttle.com)

8 a.m. to 6 p.m. with extended hours to 8 p.m. in mid-summer. Check stop for last bus time. Shuttles arrive every 10-15 minutes. Shuttle is free with admission; no reservations required.

We suggest boarding at the Shuttle Station to avoid lines. After the Visitor Center, ride two stops to visit Bryce Point, then reboard to visit Inspiration Point. From here it is a 1.2 mi (2.0 km) walk along the Rim Trail past Sunset Point to Sunrise Point. Hike further north and turn left for the shuttle, or enjoy the Queen's Garden and Navajo Loop Trails.

### BRYCE AMPHITHEATER SHUTTLE ROUTE



**DRIVING A LARGE VEHICLE?**  
During shuttle hours, vehicles 23 ft / 7 m or longer are restricted from parking in the Bryce Amphitheater area (Sunset, Sunset, Inspiration, Bryce, and Paria Viewpoints, Lodge, and Visitor Center). Park at Shuttle Station, Additional Parking Lot across from Visitor Center, or your campsite and use free park shuttle to visit these areas. No length restrictions exist on Southern Scenic Drive.



# Hiking Guide

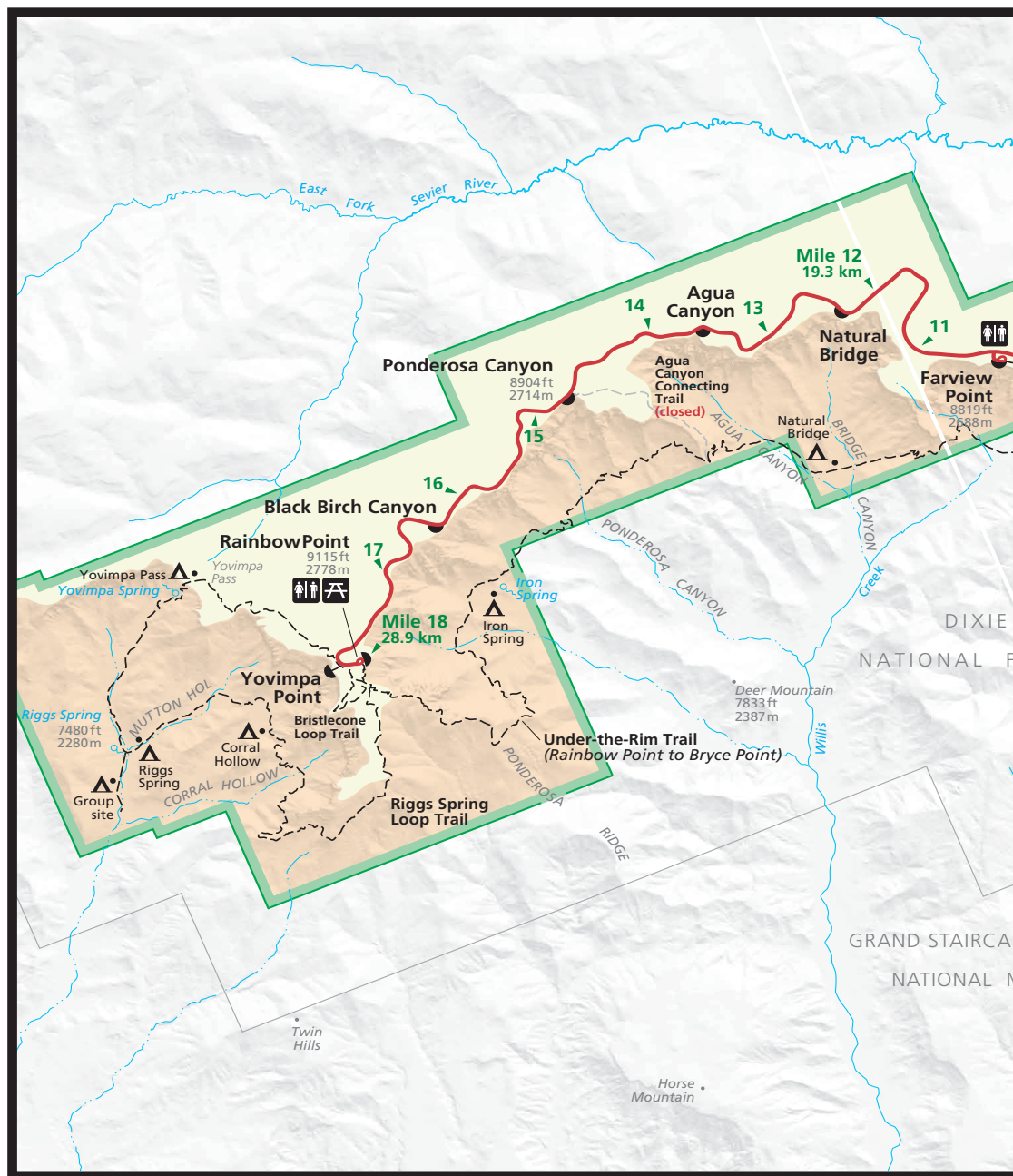
Easy, Moderate, Strenuous

## Trail Restrictions

No pets or bicycles on park trails. See inside section "Things to Do" for more details.



TRAILHEAD	DISTANCE	ASCENT	DESCRIPTION
<b>Mossy Cave</b> North end of park, 4 mi east on Hwy 12	0.8 mi 1.3 km 1 hour	150 feet / 46 meters	Streamside walk up to a grotto that fills with spectacular icicles in winter, and dripping mosses in summer.
<b>Sunset to Sunrise</b> Sunset or Sunrise Point <b>Easiest Walk</b>	1.0 mi 1.6 km 1 hour	40 feet / 12 meters	<b>Only paved section of Rim Trail.</b> Leashed pets allowed. Easiest hike in park with views of Bryce Amphitheater.
<b>Rim Trail</b> Bryce, Inspiration, Sunset, Sunrise, or Fairyland Point.	1.0-11.0 mi 1.6-17.7 km 1-7.5 hours	719 feet / 219 meters	Connects one-way from Bryce Point to Fairyland Point. Paved and flat from Sunset to Sunrise Sunrise Point. Pairs well with the park shuttle. <b>Bryce to Inspiration section closed in winter.</b>
<b>Bristlecone Loop</b> Rainbow Point or Yovimpa Point	1.0 mi 1.6 km 1 hour	200 feet / 61 meters	High-elevation hike with bristlecone pines and expansive vistas. Pair with the 18-mile Scenic Southern Drive.
<b>Queen's Garden</b> Sunrise Point	1.8 mi 2.9 km 1-2 hours	450 feet / 137 meters	The least difficult trail descending into Bryce Amphitheater. Down-and-back hike to Queen Victoria hoodoo. <b>Combine with Navajo Loop to form a 2.9 mi (4.6 km) loop described below.</b>
<b>Navajo Loop</b> Sunset Point <b>Only a loop in summer</b>	1.3 mi 2.1 km 1-2 hours	515 feet / 157 meters	Iconic trail with many switchbacks and two sides: Two Bridges and Wall Street. <b>Counter-clockwise direction recommended; Wall Street side closed in winter. Combine with Queen's Garden to form loop below.</b>
<b>Queen's/Navajo Combination Loop</b> Sunset or Sunrise Point <b>Most Recommended Hike!</b>	2.9 mi 4.6 km 2-3 hours	625 feet / 191 meters	Descend Queen's Garden at Sunrise Point and ascend Navajo Loop to Sunset Point. Complete loop using Sunset to Sunrise section of Rim Trail. <b>Clockwise direction recommended. Use Two Bridges side of loop in winter when Wall Street is closed.</b>
<b>Tower Bridge</b> North of Sunrise Point	3.0 mi 4.8 km 2-3 hours	760 feet / 232 meters	This is the southern portion of the Fairyland Loop. A down-and-back hike to a shady 1/4-mile spur trail leading to the Tower Bridge hoodoo.
<b>Swamp Canyon Loop</b> Swamp Canyon Viewpoint	4.0 mi 6.4 km 3-4 hours	800 feet / 244 meters	A more forested backcountry hike. More rugged than Bryce Amphitheater trails with less signage. <b>Counter-clockwise direction recommended.</b>
<b>Hat Shop</b> Bryce Point	4.0 mi 6.4 km 3-4 hours	1380 feet / 421 meters	Descend the backcountry Under-the-Rim Trail on a down-and-back hike to a cluster of balanced-rock hoodoos.
<b>Fairyland Loop</b> Fairyland Point or north of Sunrise Point at Tower Bridge trailhead.	8.0 mi 12.9 km 4-5 hours	1900 feet / 579 meters	Combine hiking along the plateau rim near Boat Mesa with long views of the Bryce Amphitheater surrounded by unique hoodoos on this quiet hike.
<b>Peekaboo Loop</b> Bryce Point 	5.5 mi 8.9 km 3-4 hours	1560 feet / 474 meters	Descend 670 ft (204 m) from Bryce Point to this hoodoo-filled loop before ascending back up to Bryce Point. <b>Clockwise direction recommended.</b>
<b>Navajo / Peekaboo Combination Loop</b> Sunset Point 	4.9 mi 7.9 km 3-4 hours	1475 feet / 450 meters	Combine the Navajo Loop and Peekaboo Loop Trails into a mini Figure-8 Combination. <b>Use Two Bridges side of Navajo in winter.</b>
<b>The Figure-8 Combination</b> Sunrise / Sunset Point 	6.4 mi 10.3 km 4-5 hours	1575 feet / 480 meters	Combine the Queen's/Navajo Combination Loop and Peekaboo Loop into one ultimate hike! <b>Clockwise direction recommended.</b>
<b>Bryce Amphitheater Traverse</b> Bryce Point 	4.7 mi 7.6 km 3-4 hours	1145 feet / 349 meters	One-way hike. Descend from Bryce Point, turn left (clockwise) on Peekaboo Loop, connect to Queen's Garden and ascend to Sunrise Point.



## Scenic Areas

Want to see it all? Read "Plan Your Visit" section

**Rainbow & Yovimpa Points**  
Mile 18  
29 km



Yovimpa Point

**Bryce Amphitheater**  
Miles 1-3  
1.6-4.8 km



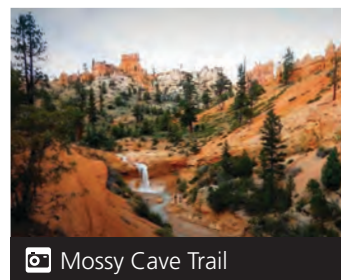
Inspiration Point

**Natural Bridge**  
Mile 12.5  
20 km



Natural Bridge Viewpoint

**Mossy Cave**  
4 mi/6.4 km east on Highway 12



Mossy Cave Trail

## Plan Your Visit

Check out the new National Park Service App! Things to do, self-guided tours, and more. Scan code at right:



Welcome to Bryce Canyon, home to the largest collection of hoodoos (irregularly-eroded rock spires) in the world! Situated along the east edge of a plateau, the park has one main 18-mile north-to-south road and only one entrance/exit. As you enter the park, all viewpoints and hikes are on the left.



### BRYCE AMPHITHEATER

This iconic area is located along the first three miles of the main road, and has four main viewpoints: **Bryce, Inspiration, Sunset, and Sunrise Points.** We suggest visiting these viewpoints in this same order (south to north). Most of the park's day hikes are found here.

**Avoid full parking lots: Use free shuttle to see the Bryce Amphitheater April to October. See "Bryce Amphitheater Shuttle" on opposite page.**



### SOUTHERN SCENIC DRIVE

Drive the main road 18 miles (35 min) until it ends at the park's highest elevations at Rainbow and Yovimpa Points. Consider the 1-mile Bristlecone Loop to stretch your legs. Stop at viewpoints like Natural Bridge and Agua Canyon on your return trip north.



### MOSSY CAVE

Located off Highway 12 in the north end of the park, this is the only easy hike that begins below the hoodoos. See a waterfall in summer and icicles in winter. Please observe trail signs in this fragile area.



### VISITING 1 TO 3 HOURS?

Enjoy the **Bryce Amphitheater** area of the park. Using the shuttle (April - October) or your own vehicle, visit all four viewpoints listed above.

For an easy walk, enjoy the 0.5-mile (0.8 km) section of **Rim Trail** between Sunset and Sunrise Points. The more challenging 2.9-mile (4.6 km) **Queen's/Navajo Combination Loop** can be started at either Sunset or Sunrise Point and usually takes 2 hours.

### VISITING 4+ HOURS?

Consider the trip ideas at left, and if the park is busy, consider beginning with the **Southern Scenic Drive** as described above. Consider more strenuous hikes like the 6.4-mile (10.2 km) **Figure-8 Combination** or 8-mile (12.9 km) **Fairyland Loop**. If looking for easier hikes, enjoy a short walk at **Mossy Cave** in the early morning or late afternoon. Pick up a **Junior Ranger** book at the Visitor Center and see the **Park Film and Museum**. Join us for a **Ranger Program**, or enjoy other Things to Do listed inside this guide.

## Enjoy Your Park Responsibly



### NO DRONES

Unmanned aircraft is restricted from use in all national parks,

including Bryce Canyon National Park. Violators are subject to legal action and fines in accordance with 36 CFR 1.5.

**Report drone use to nearest park ranger.**



### LIGHTNING

If you hear thunder, a storm is within 10 miles and a strike is possible.

The plateau rim is the most dangerous place. Move to a building or vehicle, avoiding trees, hoodoos, and other tall objects. Lightning has claimed 4 lives and injured 6 in the past 30 years at Bryce Canyon.



### INJURIES

Ankle injuries from improper footwear, dehydration, and

elevation-related illnesses are the most common emergencies.

**Winter hikers should use traction devices (available to purchase at Visitor Center).**

**Drink at least 1 liter of water every two hours.**



### PROTECT BRYCE

This is a unique, and very fragile landscape.

**No Climbing:** The rocks here are soft limestones that fracture and crumble easily.

**Rare Plants:** Plants that grow only on these rocks are small and easily crushed. Please protect them by not walking off or short-cutting the trail.



**EMERGENCY:** 9-1-1 or **NON-EMERGENCY LAW ENFORCEMENT:** (928) 608-6301

**NEAREST MEDICAL FACILITY:** Garfield Hospital & Clinic is located in Panguitch, UT. Return to Highway 12 and head West 13.6 mi to US-89 N. Travel 6.5 mi to Panguitch and turn right on N 400 E St. Directions also available at Visitor Center desk. **Hospital:** 435-676-8811



# Ranger Programs and Activities

Visit our Calendar page for current programs!  
[go.nps.gov/BryceCalendar](http://go.nps.gov/BryceCalendar)



## RANGER PROGRAMS

Ranger talks are offered every day. Some programs may require same-day reservations. Outdoor programs are weather-dependent and may be cancelled due to inclement weather, such as lightning within 10 miles and temperatures below 10 F/-12 C. **Check our schedule online (scan code above) or at the Visitor Center.**



## EVENING PROGRAMS

From human history to wildlife, night skies to geology—evening programs offer an opportunity to explore a wide variety of subjects. For program topics and locations, see schedule in the Visitor Center or scan the QR code at the top of this section.



## ASTRONOMY PROGRAMS

Bryce Canyon is one of the darkest places in North America accessible by paved roads. Telescope viewing is offered most frequently between Memorial Day and Labor Day. See schedule in the Visitor Center or scan the QR code at the top of this section.



## FULL MOON HIKES

See our website for dates (scan QR code above). Hikes by lottery only. Lotteries held at 4 p.m. at the Visitor Center. All members of the group must be present to sign up and must show footwear. Lug soles required, tennis shoes or sandals are not permitted. Hikes are 1-2 hours, 1-2 miles long. Ages 8+.



## BECOME A JUNIOR RANGER

Visitors of all ages are welcome to participate. See Visitor Center to pick up a book (pencils not provided) and earn a unique Bryce Canyon badge. Pairs great with Hike the Hoodoos program (see section below).



## SNOWSHOEING AND X-COUNTRY SKIING

Snowshoe programs are offered when snowpack and staffing allow. At least 14 inches of snow is required. Hikes are typically 1.5 miles, lasting no more than 2 hours. See ranger schedule for times and locations. Cross-country skiing is permitted in all areas of the park except beneath the rim. Obtain a map of groomed and ungroomed trails at the Visitor Center or at Ruby's Inn. Snowshoeing is permitted on all park trails, including those below the rim. Please be mindful not to disturb groomed cross-country ski trails.



## GEOLOGY AND ASTRONOMY FESTIVALS

Annual festivals feature renowned guest speakers, special ranger programs, and more. The Astronomy Festival occurs around the new moon in June, and the Geology Festival occurs in July each year.



## CHRISTMAS BIRD COUNT AND JULY BUTTERFLY COUNT

Join us for these citizen science events! All levels of experience welcome. Email [brca\\_information@nps.gov](mailto:brca_information@nps.gov) for information.

# Things to Do

Check out the new National Park Service App!  
[go.nps.gov/NPSApp](http://go.nps.gov/NPSApp)



## HIKING

Bryce Canyon has approximately 60 miles of trails to explore, and every single one will show you a unique side of this park. Refer to the Hiking Guide on the opposite page. Protect this delicate landscape by always staying on trail. Walking off-trail in park meadows is not permitted. **Remember appropriate footwear and water.**



## PETS IN THE PARK

**Pets only allowed on paved areas,** including: park viewpoints, Shared-Use Path, the Rim Trail between Sunset and Sunrise Points, and park campgrounds. Pets must always be leashed (6' or shorter), and cleaned up after. Inquire at the Visitor Center about our B.A.R.K. Ranger program!



## WINTER RECREATION

Snowshoeing is permitted on all park trails. Cross-country skiing is permitted above the rim. Paria and Fairyland Roads are unplowed in winter for pedestrians. The Fairyland Point road is groomed, as are some trails north of the park. Visit Ruby's Inn Winter Recreation Center for rentals and the Visitor Center for a trail map. Traction devices recommended for hikers.



## BACKCOUNTRY CAMPING

Areas include the 8.6-mile Riggs Spring Loop, and 22.9-mile Under-the-Rim Trail. Fees are \$10/permit and \$5/person. Sites limited to 6 campers. 2 group sites limited to 15 per night. Permits available in-person and online at [Recreation.gov](http://Recreation.gov). Visit [go.nps.gov/BryceCommercialServices](http://go.nps.gov/BryceCommercialServices) for local private shuttle options.



## BICYCLING

Bicycles are restricted to paved surfaces, campground roads, and the Shared-Use Path (see map). Bike racks located at viewpoints and facilities along the path. eBikes without throttle assist are permitted on Shared-Use Path. No bicycles are allowed on park trails. Shuttles can carry up to 2 bikes. Rentals available near Lodge at historic Service Station.



## WILDLIFE VIEWING

Pullouts are available for viewing from park roads. Prairie dogs and other wildlife most abundant March through October. Stop by the Visitor Center for lists of park species. If you can cover the animal with your thumb at arm's length you're at a safe and respectful distance. Feeding wildlife is animal cruelty, exposes you to danger and infectious disease.



## HORSEBACK RIDING

Wrangler-led trail rides are provided Spring-Fall; \$75 to \$100 dollars for 1.5 to 3 hr rides. Inquire at Horse Corral, at [canyonrides.com](http://canyonrides.com), or call 435-834-5500. The use of privately-owned stock is permitted by reservation. Please e-mail us at [brca\\_horserides@nps.gov](mailto:brca_horserides@nps.gov) at least 72 hours in advance to schedule a reservation inspection for your stock.



## NIGHT SKIES

All viewpoints present a spectacular view of the night sky. Rangers often recommend Inspiration Point for accessible viewing year-round. Only use red light to preserve your night vision and see the most stars. Since 2019, Bryce Canyon has been recognized as an International Dark Sky Park. Learn about this designation at [www.darksky.org](http://www.darksky.org)



## PARK FILM AND MUSEUM

The park film, "A Song of Seasons" is 24 minutes long and plays every hour and half hour. Last showing is one hour prior to Visitor Center closing time. While at the Visitor Center, enjoy the park museum and learn about the park's geology, ecology, human history, and night skies.

# "Hike the Hoodoos" Program

Hiking is great exercise and Bryce Canyon's "I Hiked the Hoodoos!" program is not just hiking, it's also a scavenger hunt with a special reward!

- In order to qualify for the reward, hike a minimum of 3.0 miles, or find at least 3 benchmarks and complete steps 2 through 4 below.
- Each individual must have either a pencil rubbing of the benchmark (see Jr. Ranger Book) or a "selfie" with the benchmark.
- Only special "I Hiked the Hoodoos" benchmarks qualify for the reward. USGS benchmarks found at various locations within the park do not qualify.
- Rewards are available at the Visitor Center, so bring your photos or pencil rubbings to the front desk!

Benchmark	Distance	
	miles	km
Mossy Cave	0.8	1.3
Rim Trail/Fairyland	2.5	4.0
Tower Bridge	3.0	4.8
Queen's Garden	1.8	2.9
Navajo Loop	1.3	2.1
Peekaboo Loop	2.4	3.9
Wall of Windows	1.6	2.6
Sheep Creek	4.0	6.4
Bristlecone Loop	1.0	1.6



Check out the Hiking Guide on the front of this Visitor Guide for help choosing an appropriate hike for your group!

# Bryce Canyon Association

Shop Online and Become a Member:



**BRYCE CANYON**  
ASSOCIATION

## Supporting Bryce Canyon since 1961

The Bryce Canyon Association (BCA) supports education, research, infrastructure, and unique programs for the benefit of Bryce Canyon National Park visitors. Combined with sales from our bookstore, BCA has provided **over \$9 million** dollars of support to this world-renowned natural resource and the experience of its visitors.

## What Members mean to this Park...

By becoming a member of the BCA you'll receive a 15% discount in BCA stores, a one-time free gift, and discounts at more than 400 cooperating association bookstores in national parks and public lands across the country.

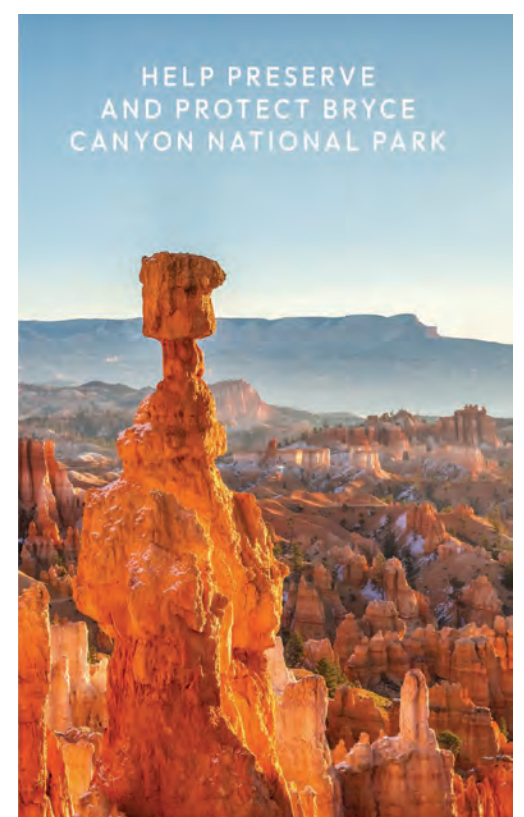
## Visit our website or the Visitor Center bookstore to see how you can help support:

- This Visitor Guide and other free publications
- Resource management research and activities
- The Geology Festival, Astronomy Festival and other special events
- Scholarships, internships and education initiatives both within and outside the park
- Research and training for park staff on the geology of the Colorado Plateau
- Bryce Canyon's recycling program, and more!

## Staying the night? The Bryce Canyon Lodge and Ruby's Inn have implemented a \$1 Donation Program:

Hotel guests can donate a dollar to the park each night of their visit. Since 2004 **over \$1 million** has been contributed to fund seasonal employees and visitor services.

Learn More and Shop Online: [www.brycecanyon.org](http://www.brycecanyon.org) or call at 888-362-2642



Ready to do more? By joining the Bryce Canyon Association, you take an active role in the future of Bryce Canyon National Park.



# Services

For additional information about services in the local area visit [www.brycecanyoncountry.com](http://www.brycecanyoncountry.com):



**LODGING**  
The Lodge at Bryce Canyon is open Spring-Fall. Winter lodging may be available. Reservations: Call 877-386-4383 or visit [brycecanyonforever.com](http://brycecanyonforever.com). See above for local options.

**ACCESSIBILITY**  
Restrooms, the Visitor Center, Bryce Canyon Lodge, Valhalla, and General Store are fully accessible when open, as are most viewpoints. The ½-mile section of Rim Trail between Sunset and Sunrise Points is paved and fairly level.  
**Free Access Guide at Visitor Center**

**CAMPGROUNDS: NORTH & SUNSET**  
North CG is first-come, first-served 10/2 - 5/26 and reservation-only from 5/19 - 10/7. Sunset CG is open 4/15 - 10/31 for first-come, first-served camping. Group site on reservation. All reservations up to 6 mos in advance on Recreation.gov RVs (\$30/night, no hook-ups) and tents (\$20/night). Holders of the Senior and Access Pass receive 50% discounts. No discount with regular annual passes. Dump station use included with RV site fee.

**RESTAURANTS**  
Spring - Fall, the Lodge at Bryce Canyon offers breakfast through dinner and the General Store offers grab-and-go food and basic groceries. See link above for local options outside the park.

**PICNIC AND GRILL AREAS**  
Available at Sunset Point, N. Campground (with grills), General Store, Mile 4.5 of the main road, Whiteman Bench, and Yovimpa Point.

**LAUNDRY**  
Spring-Fall at the General Store during business hours. Winter facilities at Ruby's Inn.

**MONEY**  
An ATM is available at the Lodge at Bryce Canyon and at Ruby's Inn General Store.

**GIFT SHOPS AND PENNY MACHINES**  
Bookstore located at Visitor Center, purchases support the park. Penny machines at Sunrise Point General Store and Ruby's Inn General Store.

**RESTROOMS**  
Available at the Visitor Center, N. Campground, Mossy Cave, Sunset, Farview, Rainbow Points. In summer at Inspiration Point, General Store, Lodge, and Peekaboo Loop.

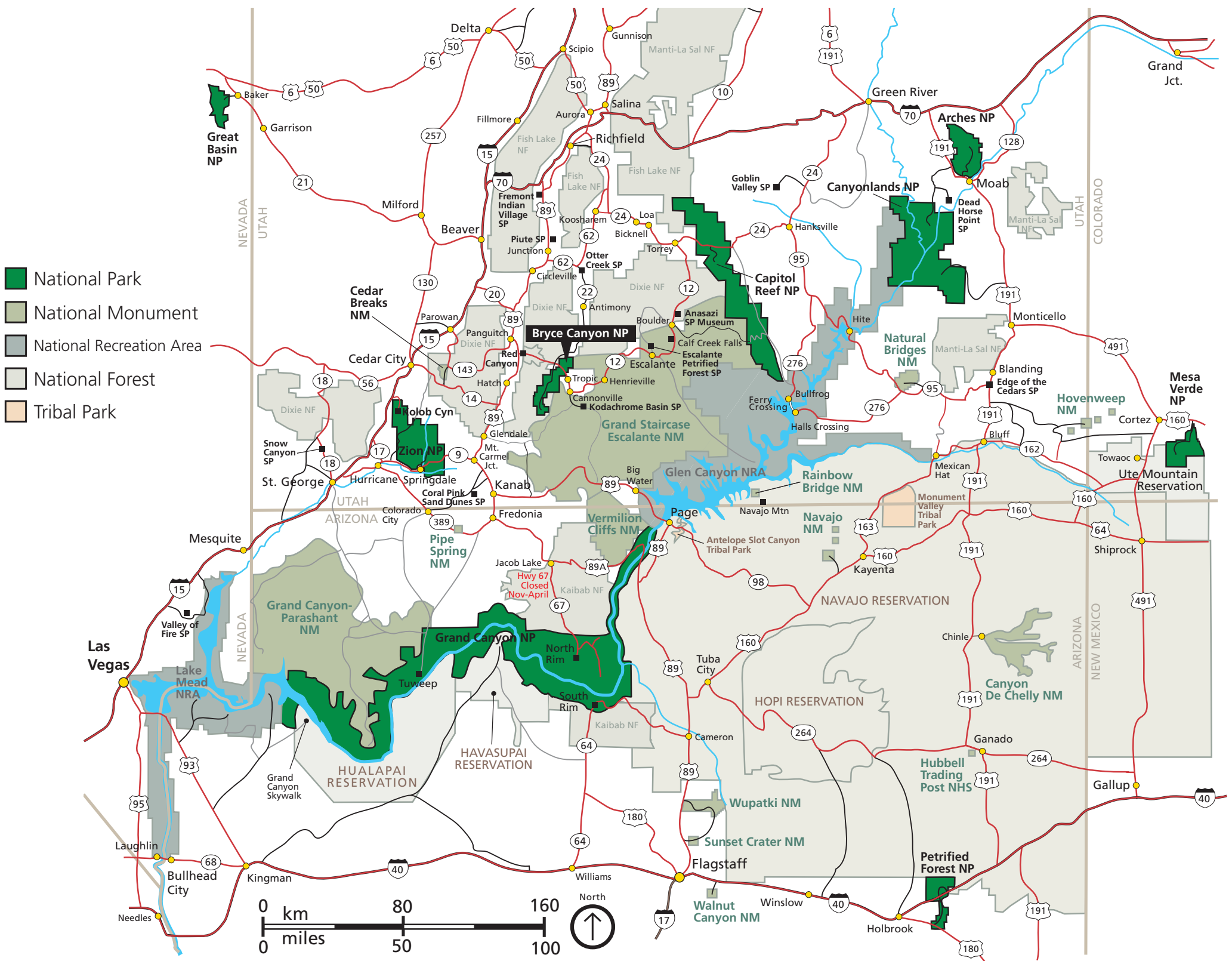
**POST OFFICE**  
Dropbox mailbox is located at the Visitor Center. Post Office at Ruby's Inn is open Mon to Sat. Stamps available at the Visitor Center.

**SHOWERS**  
Spring-Fall at General Store during business hours. Winter facilities at Ruby's Inn.

**WIFI**  
Public WiFi connection available at the Visitor Center and Lodge.

**FIREWOOD**  
Available at the General Store and Ruby's Inn General Store. Collecting firewood in the park is not permitted.

# Regional Map



## ROAD CONDITIONS

Current Utah Road Conditions: [utahcommuterlink.com](http://utahcommuterlink.com)  
Call or visit Parks or Agencies for internal roads updates and conditions.

## AVERAGE DRIVE TIMES (HOURS)

Arches NP (via US 89 & I-70) 4 ½  
Arches NP (via UT-12) 5  
Capitol Reef NP (via UT-12) 2 ½  
Canyonlands (N Ent. 89 & 70) 4 ½

Cedar Breaks NM (via 12 & 143) 1 ¼  
Cedar City 1 ½  
Escalante 1  
Grand Canyon NP (North Rim) 3  
Grand Canyon NP (South Rim) 5  
Las Vegas 4  
Page, AZ 3  
Salt Lake City 4 ½  
Zion NP (East Entrance) 1 ½  
Zion NP (West Entrance) 2 ½

# Connect with Your Park

**SUPERINTENDENT**  
Jim Ireland

**MAILING ADDRESS**  
PO Box 640201  
Bryce, UT 84764-0201

**PARK INFORMATION**  
E-mail [brca\\_information@nps.gov](mailto:brca_information@nps.gov)  
or call 435-834-5322

**WEBSITE**  
[www.nps.gov/brca](http://www.nps.gov/brca)

**SOCIAL MEDIA**   
[www.facebook.com/brycecanyonnps](http://www.facebook.com/brycecanyonnps)  
[www.instagram.com/brycecanyonnps\\_gov](http://www.instagram.com/brycecanyonnps_gov)  
[www.twitter.com/brycecanyonnps](http://www.twitter.com/brycecanyonnps)

**LOST AND FOUND (PLEASE E-MAIL)**  
[brca\\_information@nps.gov](mailto:brca_information@nps.gov)

**EMERGENCIES**  
9-1-1

**REPORTING FIRES**  
Locate a park ranger to report fires. Observed fires are often controlled burns.  
**Wildland Fire Reporting: 435-865-4611**

**LEAVE A COMMENT**  
We want to hear how our staff, facilities, and partners contributed to your experience. Comment forms are available at the front desk at the Visitor Center. Alternatively, send us an e-mail, find us on social media, or call.



## BECOME A VOLUNTEER

Volunteers work with park employees to preserve park resources, play a role in educating and engaging our visitors, and get to live in one of the world's most beautiful places. E-mail us at [brca\\_information@nps.gov](mailto:brca_information@nps.gov), or visit [www.volunteer.gov/s/](http://www.volunteer.gov/s/) for more opportunities.



## WORK WITH THE NATIONAL PARK SERVICE

The National Park Service doesn't just hire rangers. We employ mechanics, museum curators, data analysts, landscape architects, engineers, educators, law enforcement and more. All job vacancies are posted on USAJobs.gov



## YOUR FEE DOLLARS AT WORK

Learn more about how Bryce Canyon and other parks use your fee dollars at: [www.nps.gov/aboutus/fees-at-work.htm](http://www.nps.gov/aboutus/fees-at-work.htm)

# Park Facts

**ESTABLISHMENT**  
National Monument: June 8, 1923  
National Park: September 15, 1928

**SIZE**  
55.98 mi<sup>2</sup> (145 sq km)  
35,830 acres

## PARK PURPOSE

Bryce Canyon National Park protects and conserves resources integral to a landscape of unusual scenic beauty exemplified by the highly colored and fantastically eroded geological features, including rock fins and spires, for the benefit and enjoyment of the people.